

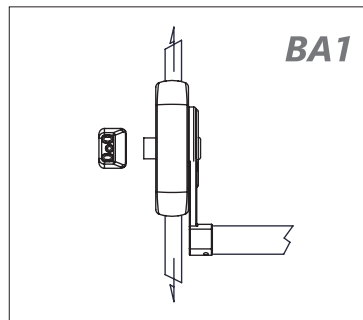
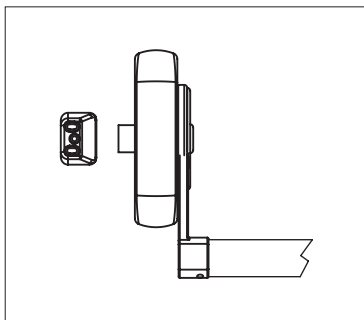
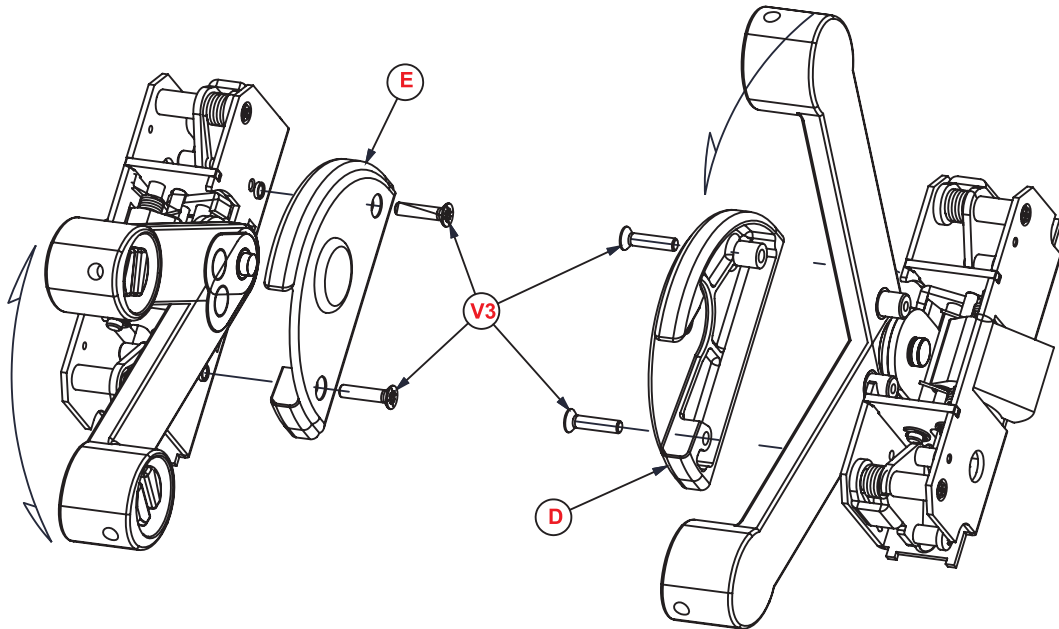


CE	SARO GLOBAL Tehran - Iran
0425 - 3001	3 - 7 - 7 - B - 1 - 4 - 2 - 2 - A - A
EN 1125:2008	16

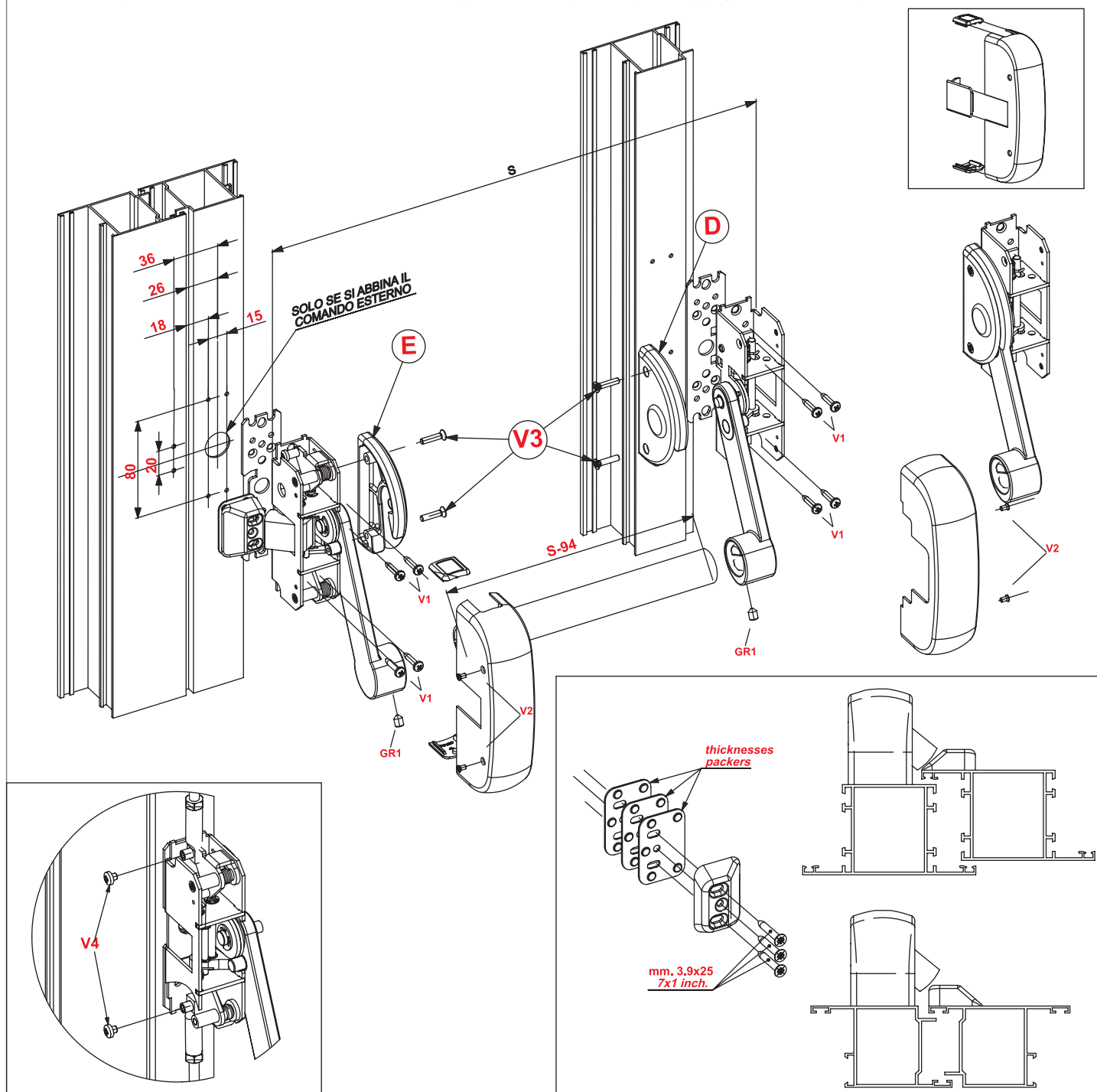
Max 1300mm.
-20°C/+100°C
Max 2500 mm.
Max >200Kg.

The features of this panic exit device are of utmost importance for people's safety. Therefore in no case may any changes be made to the product. The fire-resistance time is 69 minutes for every door configuration.

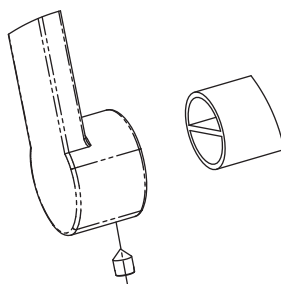
Turn the bracket to determine the left or right-hand opening, fasten caps D and E to the mechanism using screws V3



After completing work on the profile, fasten the push bar in place using the **V1 screws** provided (8 self-tapping screws, Ø3.9 mm)



Fit the horizontal bar into the seat provided in the bracket.
Screw in grup GR all the way.



Cod. Art.	EB1	EB3
GR1	2	2
V1	8	8
V2	4	4
V3	4	4
V4	0	2