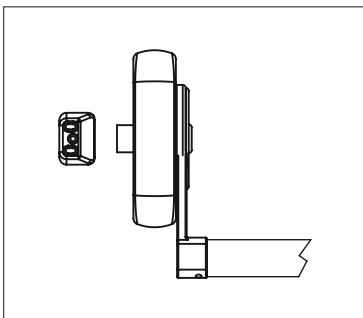
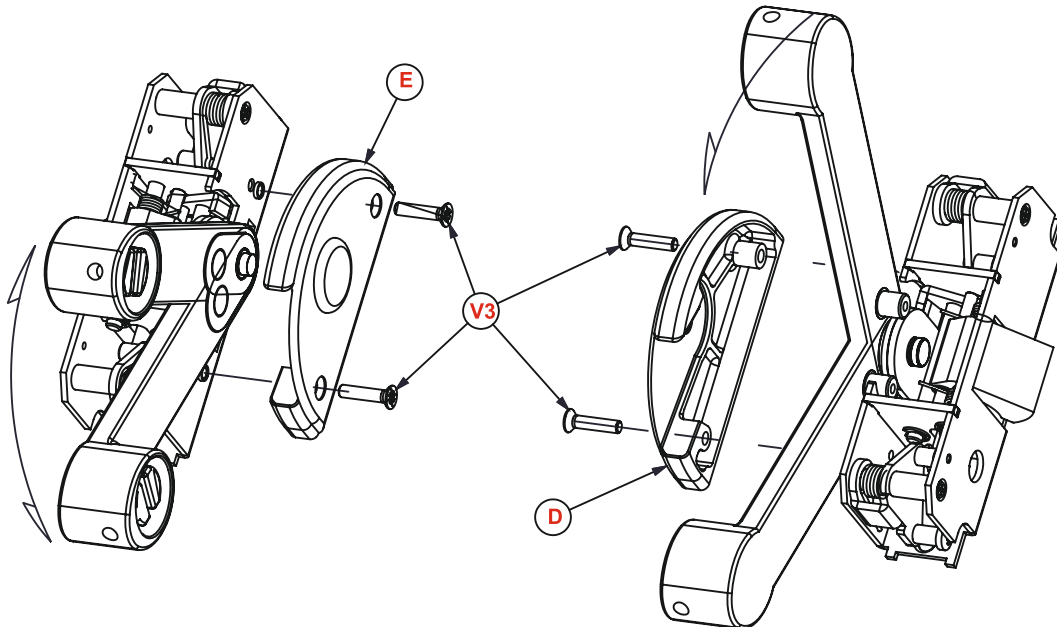


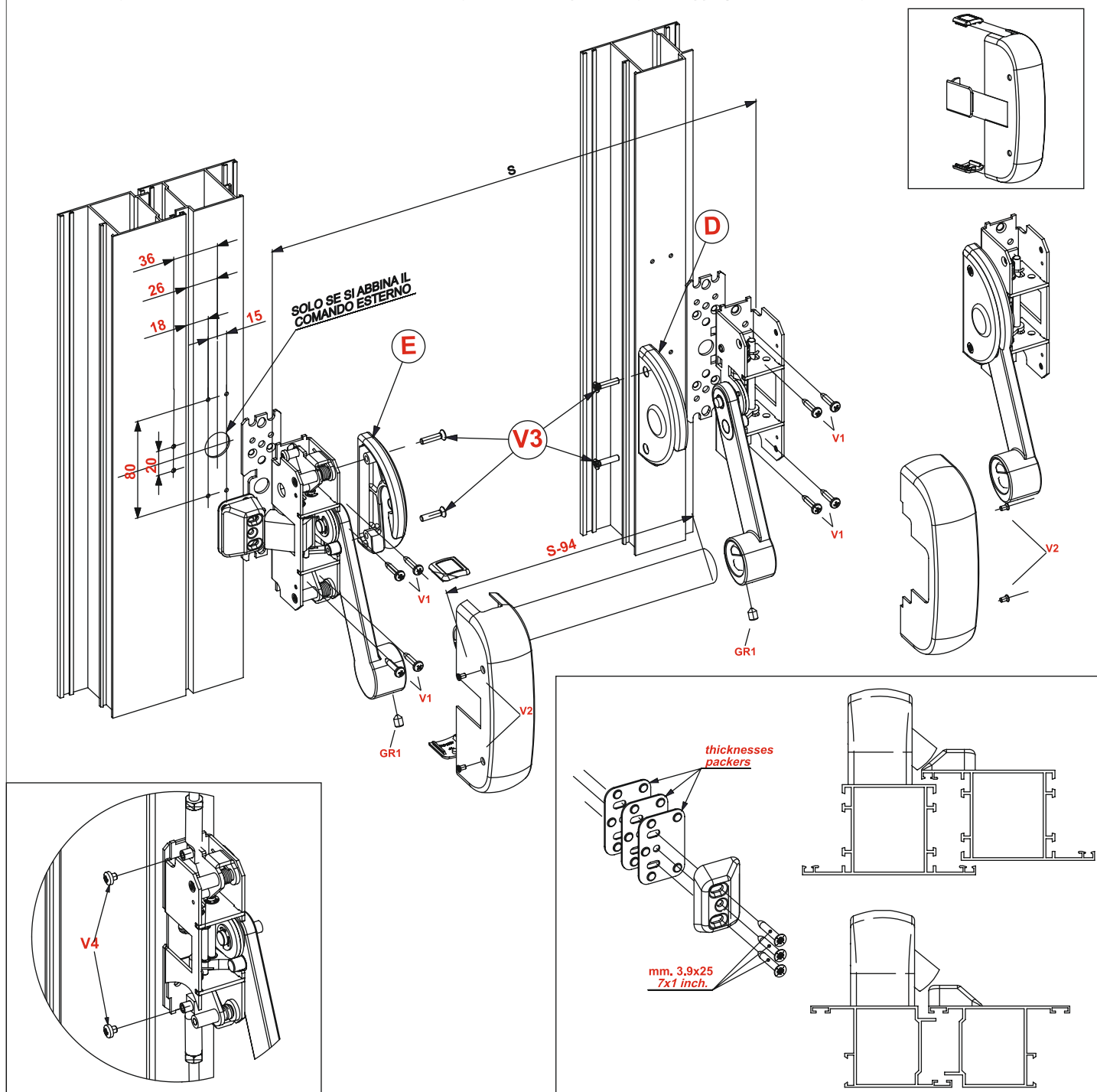


The features of this panic exit device are of utmost importance for people's safety. Therefore in no case may any changes be made to the product. The fire-resistance time is 69 minutes for every door configuration.

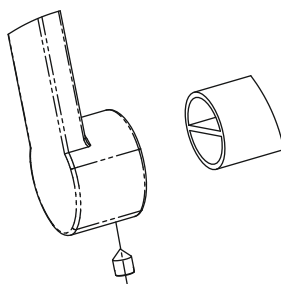
Turn the bracket to determine the left or right-hand opening, fasten caps D and E to the mechanism using screws V*



After completing work on the profile, fasten the push bar in place using the **V1 screws** provided (8 self-tapping screws, Ø3.9 mm)



Fit the horizontal bar into the seat provided in the bracket.
Screw in grup GR all the way.



Cod. Art.	401	402	403
GR1	2	2	2
V1	8	8	8
V2	4	4	4
V3	4	4	4
V4	0	2	2